

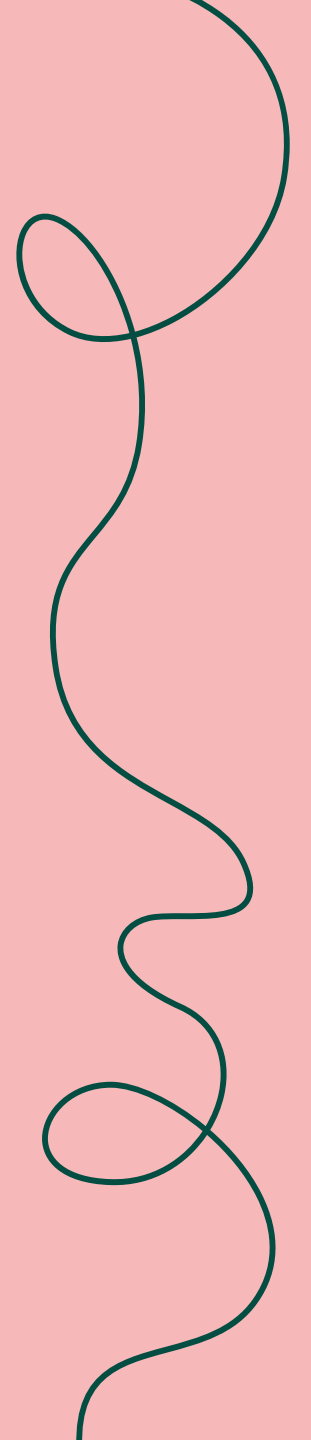
# Social work professional journey



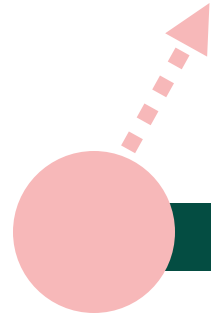
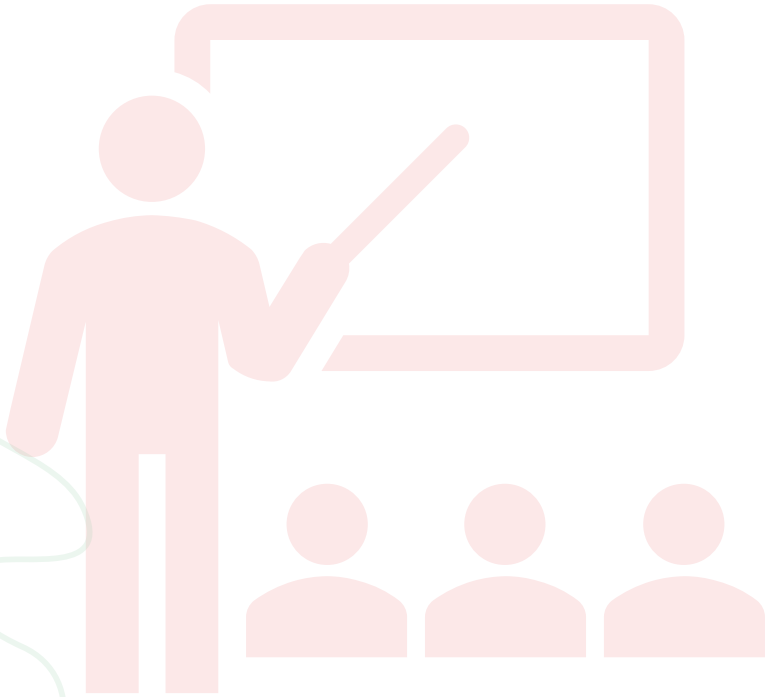
“

I have witnessed social workers work with vulnerable adults, showing empathy and making them feel valued. This was when I discovered that the social work profession is built on a strong set of values, which includes respecting the dignity, worth, and equality of every human being. The way and manner in which social workers also protect their social work identities made me fall in love with the profession.

- *student social worker*



# entry to social work programme



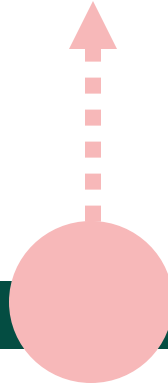
- academic profile: age, profile, experience
- routes into social work
- consistency in curriculum – content and approach
- quality of teaching
- quality of placements
- role of practice educators
- equality, diversity and inclusion

# qualification and registration

- quality and consistency of the assessed and supported year in employment (ASYE)
- readiness for professional practice
- teaching partnerships - relationship between employers and providers
- training providers
- practice supervisors and assessors
- Early career framework (ECF) proposals
- NQSW status

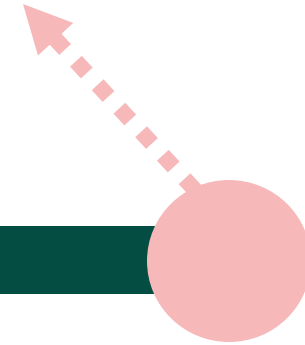


# early career



- retention
- work environment
- agency working
- caseloads
- supervision
- models of intervention
- management and leadership
- continuing professional development

# opportunities for career progression



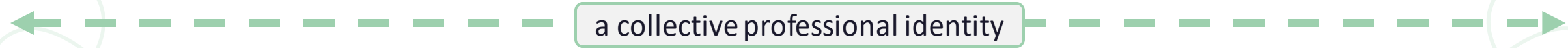
- specialisms
- experienced practice
- management and leadership
- principal social worker (PSW)
- Consultants
- Independent social workers
- portfolio working and mobility
- Networks and associations

entry to social  
work programme

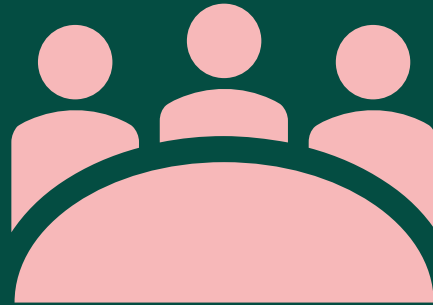
regulation  
and registration

early  
career

opportunities  
for career progression



# workforce planning



- national workforce roundtable and workstreams
  - research and data
  - perceptions and understanding
    - Collaboration